

We Are Here | Families Experiencing Homelessness Stories of Resilience

DISCUSSION GUIDE

UNDERSTANDING THE HARDSHIPS OF HOMELESSNESS AND FAMILY SEPARATION

Notice...

1. The video participants shared their personal experiences with homelessness and substance use. What about their stories surprised you?
2. How did they talk about the ways others treated them?

Reflect...

3. In what ways can our beliefs about homelessness and the experiences of young children affect access to interventions and supports?
4. How did the various people in the video challenge your own beliefs? How can you further examine your perspective and advocate that others do the same??

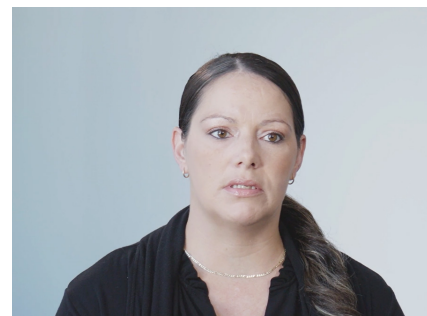
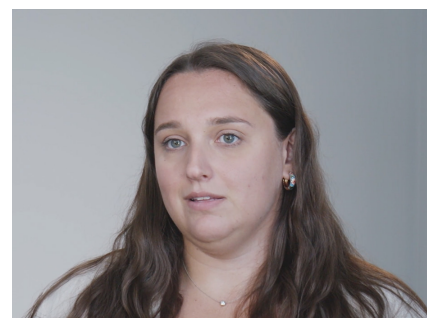
EFFECTIVE SUPPORT FOR FAMILIES

Notice...

5. What were some things that the participants said were helpful for them? What strengths are highlighted?
6. Where were some aspects of attachment and trauma-responsive approaches discussed in the video?

Reflect...

7. What aspects of the issues and best practices that were discussed in the video relate to your practice?
8. What can you, as a provider, peer, or family member, do to strengthen healthy early childhood development in the care and support you provide?



WE ARE HERE

stories exploring the impacts of
homelessness on early childhood
development and barriers families
face when accessing services

For more information, contact:
UNH Institute on Disability
contact.iod@unh.edu

a project of



made possible by a Children's Mental Health Champion award,
supported by the Centers for Disease Control & Prevention of
the U.S. Department of Health and Human Services.

